

SPM MODEL TEST 2

PAPER 1

One hour and forty-five minutes

This question paper consists of **two** sections. **Section A** and **Section B**. Answer **both** sections.

Section A: Directed Writing

[35 marks]

[Time suggested: 45 minutes]

Obesity has been on the rise, with more young people becoming obese. Your school has decided to launch a 'Health Week' campaign to raise awareness among students about the need to be more health conscious. As the chairperson of the organising committee, you have been asked to give a **talk**.

Use the notes below to write your **talk**.

Reasons

- Improper eating habits
- Eating too much junk food
- Too many calories
- Lack of exercise
- Lazy lifestyle

Suggestions

- Exercise – 3 times a week
- Reduce food intake
- Reduce sugar and fat intake
- Change eating habits
- Have fixed time for eating
- Eat small meals

When writing your **talk**, you should remember to:

- greet the audience
- state the purpose of your talk
- use **all** the notes given
- give your **own ideas** when needed
- end your talk appropriately

Note:

For your talk, you will receive up to **15 marks** for the format and content points, and up to **20 marks** for the quality of your writing.

A very good morning to Puan Veronica Nathan, headmistress of SMK Taman Permata, teachers and fellow students. As you are aware, our school is organising a 'Health Week' to raise awareness among students about the need to be more health-conscious. Obesity has been on the rise among young people.

There are many reasons why young people are obese. Firstly, improper eating habits cause one to be obese. Eating too much fast food or junk food such as potato chips, fries and crackers in between meals is the reason why many youngsters are putting on weight nowadays. All these food contain extra calories that are not needed by the body and thus are stored as fat.

In addition, most young people dread exercising. They prefer to hang out in shopping malls and Internet cafes. Without proper exercise, they do not work off the extra fat stored and thus become overweight. Furthermore, in most homes, there are maids to do the housework. Young people tend to be lazy. They tend to be less active and lose extra weight slower or not at all.

However, there are many ways for a person to lose weight. Here are some suggestions. Exercise is the key to losing weight. You should exercise at least three times a week in order to burn extra fat that is stored in your body. The easiest exercise you can do is brisk walking. Walking is simple, easy and cheap.

You will also have to reduce the intake of food. In addition, lowering the intake of food that is high in sugar such as sweets, cakes, chocolate and carbonated drinks will help you lose weight.

Lastly, changing eating habits will help you control your weight. Eating a lot of vegetables and fruit instead of junk food helps to reduce your weight. Eating three meals a day at a fixed time will also help you to lose weight. Alternatively, instead of having three meals a day, you can have five small meals a day so as not to feel hungry.

Before I conclude, I hope my talk has been helpful. I hope you have gained some insight into the problem of obesity among young people and learnt ways to control your weight.

Thank you.

Section B: Continuous Writing

[50 marks]

[Time suggested: One hour]

Write a composition of about **350 words** on one of the following topics.

- 1 Describe the happiest day of your life and explain why.
- 2 Some people believe that all students in Malaysia should go to national schools. What do you think?
- 3 My ideal housing estate.
- 4 Write a story about someone who never gave up and finally succeeded. Begin your story with:
"Everybody said that she would never succeed. Everything was against her..."
- 5 'A problem shared is a problem halved.'

Describe an experience when this was true for you.

(Suggested points)

My ideal housing estate

Introduction

- Definition of a housing estate – a self-contained and peaceful environment
- Problems related to housing estates in Malaysia currently – overcrowding, improper sanitation, drainage system, crime, illegal construction of extensions, playground neglected etc.

1st paragraph

- What an ideal housing estate should have - big park, basic public amenities such as clinic, service stations, eateries, banks, malls, entertainment outlets, schools, etc.
- The estate will have regular maintenance of the facilities and public places such as multi-purpose community halls.

2nd paragraph

- The estate will be well-connected with surrounding cities through an extensive public transportation network,
- The residents will pay reasonable quit rent and assessment charges,

3rd paragraph

- *There will be a tight security system in place to ensure the safety of the residents.*
- *It has a suitable place to walk your pets and practise yoga or other exercise.*

4th paragraph

- *Good planning by contractors and housing developers are vital to create the ideal housing estate*
- *The government must impose certain regulations on developers so that they adhere to certain standards of housing development.*

Conclusion

- *I hope this creation of an ideal housing estate can be achieved in the near future.*
- *Resident associations and town councils must cooperate to ensure that housing estates are safe and liveable.*

KERTAS PEPERIKSAAN TAMAT

PAPER 2**Two hours and fifteen minutes**

This question paper consists of four sections: **Section A**, **Section B**, **Section C** and **Section D**. Answer all the sections in this question paper. Questions in **Section A** have **four options**. Answer each question by **circling A, B, C or D** on the question paper.

Section A

[15 marks]

[Time suggested: 25 minutes]

Questions 1 – 8 are based on the given stimuli. Study the information carefully and choose the best answer.

Swipe with your Song Leong Mastercard and stand to win a 4-day, 3-night grand prize holiday for four people at the prestigious Pangkor Laut Estate worth RM20,000 plus a shopping voucher worth RM8,000!

**Hurry! Contest period is from 15 June to 1 September 2017.
Please visit www.mastercard.com**

- 1 Based on the advertisement above, you may win the grand prize if you
- A use your Song Leong Mastercard during the contest period
 - B visit the website from 15 June to 1 September
 - C charge at least RM20,000 to your Mastercard
 - D shop at the prestigious Pangkor Laut Estate

MEGA SALE

<p>Discounts up to 50%</p>	▶	Kitchen cabinets	0%	▶	Interest-free instalment scheme up to 36 months
<p>Discounts up to 30%</p>	▶	Appliances Accessories Solid Surface Top			

Offer period: 9 – 31 August 2017

- 2 Based on the advertisement above, the mega sale offers
- A up to 30% discount on kitchen cabinets
 - B an interest-free instalment scheme
 - C up to 50% discount on appliances
 - D a 30% discount for 36 months

Quick SEARCH!

*Now you can search for anything on your phone.
Perfect for phone browsing, it quickly gets you what you want.
Just type the keywords and you will immediately get a list of
relevant information.*

- 3 Based on the extract of the advertisement above, you can search for anything on your phone
- A if you have a perfect phone
 - B when you type the keywords
 - C if you get a QuickSEARCH phone
 - D when you search a list of information

Three distinctive holidays, one exceptional room rate!

Every destination is a splendid vacation waiting to happen. Laze on the idyllic beaches of Burau Bay Langkawi, explore the world's oldest rainforest at Taman Negara or jump into the vibrant city fanfare of Johor Bahru.

RM 288

Single/twin-share
with breakfast

- 4 From the advertisement above, we know that
- A the room rate at a hotel in Langkawi, Taman Negara and Johor Bahru are the same
 - B you only have to pay RM288 for a holiday in Langkawi, Taman Negara and Johor Bahru
 - C all the hotels in Langkawi, Taman Negara and Johor Bahru charge only RM188 per room
 - D the hotel room rates located in the places advertised are affordable

We refer to the letter by Simon Leong from Kajang (*The Daily Mail*, 17 July) requesting QuickKL to ply more routes to Kajang.

Currently, we have two express buses, E1 and U40, to Central Market. There are also four local routes; from Beranang to Kajang, from Kajang town to Sections 1, 2, 3 and 4 at Bandar Baru Bangi, from UKM to Terminal Kajang and from Sungai Long to Bandar Baru Kajang.

At the moment, Taman Kajang Utama is not within our operation area. However, we would consider your suggestion for the future.

*Lisa Tan, Senior Manager
QuickKL Sdn. Bhd.*

- 5 Lisa Tan is writing in the newspaper **most probably** to
- A support Simon Leong's proposal
 - B request for more bus routes to Kajang
 - C complain about the lack of bus routes
 - D respond to Simon Leong's suggestion

Satellite tracking of Sabah's endangered Borneo pygmy elephants has confirmed that their numbers are dwindling because of forest clearing to make way for plantations and logging.

A two-year study by WWF-Malaysia revealed that the number of elephants in Sabah is fewer than the 1,600 animals estimated earlier.

- 6 Based on the extract from a newspaper article, the two-year study revealed that
- A there are elephants in plantations
 - B the number of plantations is increasing
 - C there are 1,600 pygmy elephants in Sabah
 - D the number of pygmy elephants is decreasing

Get this recipe book featuring original recipe creations produced for Nabasco sauces today! It includes *signature dishes* by celebrity chefs, easy-to-follow instructions and healthy eating tips.

Only available at participating hypermarkets and supermarkets and while stocks last.

- 7 The phrase *signature dishes* tells us that
- A each dish is the chefs' speciality
 - B the chefs will provide the dishes
 - C the chefs will prepare local favourites
 - D each dish is specially-signed by the chefs

We produce high-quality accounting software for any type of business. We are currently looking for talented candidates to join our CALL CENTRE.

Walk-in for an interview at:
Lower Ground Floor – Plaza Room
Park Royal Hotel
Jalan Sultan Ismail
50250 Kuala Lumpur
from 9.00 am to 4.00 pm

Remember to bring:

- your resume
- photocopies of your certificates
- a non-returnable passport-sized photograph

- 8 From the advertisement, we know that candidates
- A have to be talented in business
 - B must have a degree in accounting
 - C must go to the call centre for the interview
 - D have seven hours to attend the walk-in interview

Questions 9 – 15 are based on the following passage. Choose the best answer to fill in each blank.

A great way to begin a tour of Egypt is to head to the pyramids of Giza. A world-renowned **9**, the pyramids of Cheops, Chephren and Mycerinus sit in the desert of Giza and is a 45-minute drive **10** downtown Cairo.

Pyramids **11** tombs built for the ancient Egyptian kings known as Pharaohs. To date, archaeologists have found 118 pyramids in Egypt. **12**, the most perfect and **13** of them all is the pyramid built by Cheops (Khufu), a ruler from the 4th Dynasty (2600 – 2487 BC). Known as the Great Pyramid, this 147m tall structure is the first of the Seven Ancient Wonders of the World **14** the only one still standing.

After that, you can ride a camel **15** the desert from the second pyramid, Chephren, to the famous Sphinx. The Sphinx is a sculpture of a lion body and a human head which symbolises the Pharaoh's strength and wisdom.

Adapted from *The Star*, March 2007

- 9 A site
 B scene
 C landmark
 D monument
- 10 A to
 B from
 C along
 D towards
- 11 A is
 B are
 C was
 D were
- 12 A However
 B Although
 C Furthermore
 D Even though
- 13 A big
 B bigger
 C biggest
- 14 A or
 B so
 C and
 D but
- 15 A across
 B beside
 C between
 D towards

Section B
[10 marks]

Questions 16 – 25

Read the following poster and complete the graphic organiser.

MY FAMILY CARNIVAL

The only indoor Family Carnival is back at the PWTC!

Mummy and Baby Zone

Kid's Zone

Food and Nutrition Zone

Leisure Zone

PWTC
5-7 SEPTEMBER 2017
10.00 am to 9.00 pm

Free admission! Giveaways for the first 300 visitors.
 Fun activities and attractive promotions for everyone.
 All are free!

Every day

- Colouring contest
- Dental check-up for kids
- Medical check-up for the whole family
- Fire safety workshop for children

7 September 2017

- A talk entitled "Motivate Your Children to Read" by Robert Teo

6 September 2017

- Piano recitals and mini-concert
- Fun quiz and games

The colouring contest, dental and medical check-up and workshop will be held on the second day of the carnival.

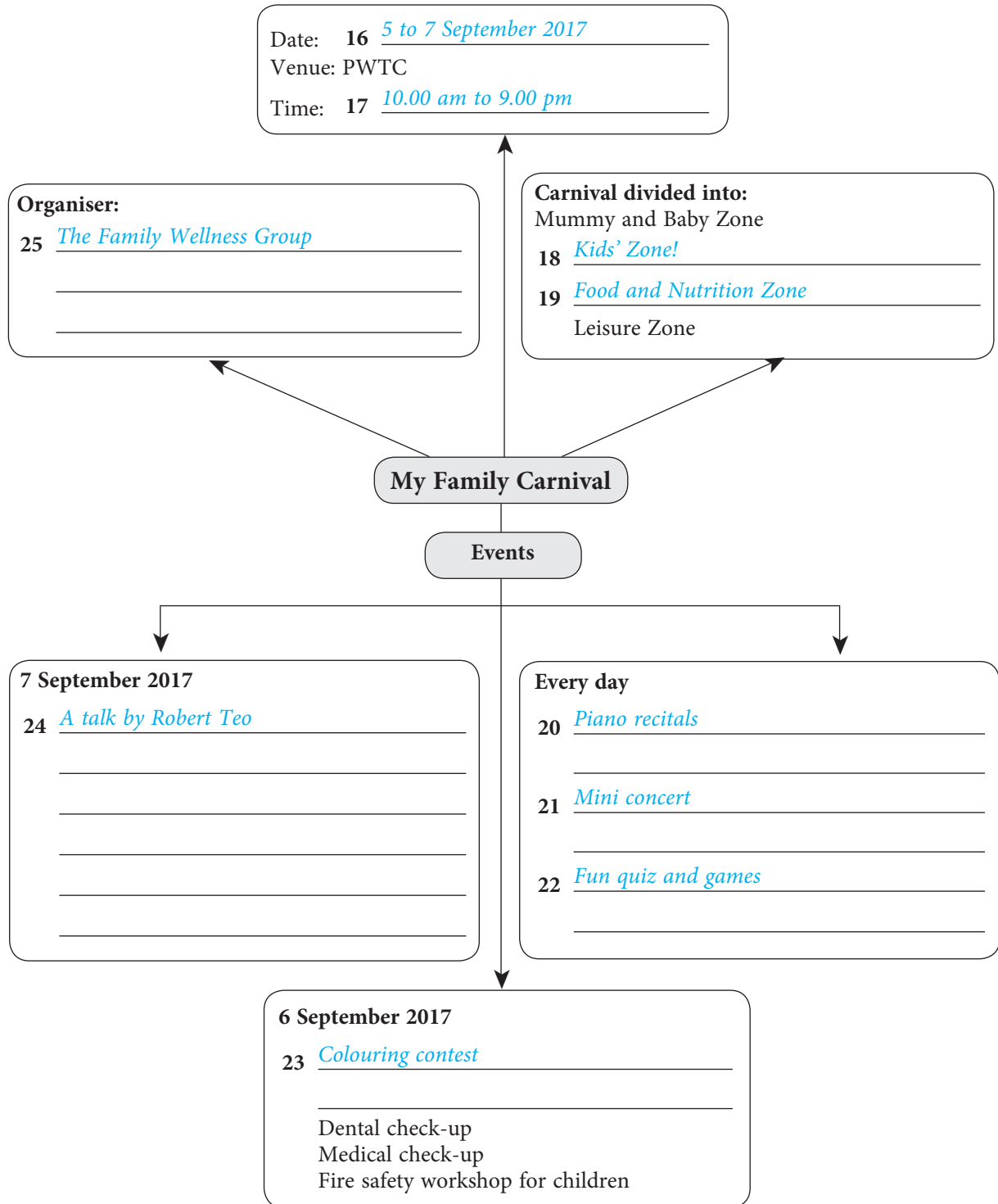
The talk will be held on the last day. Other events organised will be held at scheduled times throughout the carnival.

**Extra: Lucky draw – Win a trip for 4 to Bali;
 (3 days and 2 nights)**

Organised by The Family Wellness Group

Questions 16 – 25

Using information from the poster on My Family Carnival, complete the graphic organiser below.



Section C

[25 marks]

[Time suggested: 50 minutes]

Questions 26 – 31 are based on the following passage.

- 1 The Malaysian Mental Health Association (MMHA) was formed by a group of mental health professionals and community leaders from the then Universiti Hospital, now known as University Malaya Medical Centre. The association is a non-profit voluntary organisation which is managed by an elected committee of interested persons and professionals in the community.
- 2 Formed in 1967, MMHA has been providing a number of services to help the mentally ill cope with their problems and lead a normal life. The association offers, among others, the Illness Management Recovery (IMR) programme. 5
- 3 According to the association's president, this programme, which started in December 2007, is a psycho-social education programme following a semi-structured programme aimed at helping clients to understand their mental condition and teach them methods to cope with 10 distressing symptoms such as stress.
- 4 She said that clients will learn how to communicate and verbalise their problems, to be compliant with their medications, to recognise and report relapsing symptoms and to set goals for socialising and returning to work.
- 5 She further adds that the programme also aims to restore them to a socially functional 15 state so that they can return to work or their daily lives. This approach, she says, has been very successful in the United States, especially in the east coast states, Scandinavian countries, Japan, Hong Kong and Singapore. Currently, the association has 18 clients under this programme and a few have returned to work since participating in the programme six months ago.
- 6 The association started operations in a rented premise but since 2000 they have acquired 20 a single-storey bungalow in PJ Old Town. The centre has three full-time rehabilitation officers who assist and support clients in their recovery.
- 7 Due to public perception about mental illness, she advises the public not to make fun of mental patients. She further adds that with proper treatment, medication and care, the mentally ill can be like other people. 25
- 8 Most of the clients at the center suffer from schizophrenia but there are some who suffer from depression and obsessive-compulsive disorders. When they first joined the association, these clients lacked the understanding about their illness, were not able to work or find a job. Some of the problems they faced were due to lack of education and skills which were partly contributed by their illness. Therefore under the IMP programme, the association works with the clients to 30 tackle their problems so that they can cope better with their illness.
- 9 According to the president, the association also provides day-care programmes where a trained occupational therapist visits the centre twice a week to work with several groups namely the Family Education Programme, Depression Support Programme, Public Education Programme and Mental Health Campaigns. 35
- 10 Currently, the association has clients mainly from the younger age group; late teens and those in their 20s and 30s. The centre also has a capacity for about 30 people.

Adapted from *Helping Them Return to Society* by Maizatul Nazlina,
The Star Metro, July 2008

26 From paragraph 1, who formed the Malaysian Mental Health Association?

The Malaysian Mental Health Association (MMHA) was formed by a group of mental health professionals and community leaders from University Malaya Medical Centre

[1 mark]

27 From paragraph 2,

(a) what type of services does the association provide?

The association provides services to help the mentally ill cope with their problems and lead a normal life.

[1 mark]

(b) name **one** type of programme offered by the association to its clients.

The association offers the Illness Management Recovery (IMR) programme.

[1 mark]

28 (a) From paragraph 5, has this programme been successful? Provide a reason.

Yes, it has. A few of the clients have returned to work since participating in the programme.

[1 mark]

(b) From paragraph 6,

i. which word means 'obtained'?

'acquired'

[1 mark]

ii. what is the role of the rehabilitation officers?

They assist and support clients in their recovery.

[1 mark]

29 (a) From paragraph 7, what help can be provided to mental patients?

Proper treatment, medication and care can be provided to help mental patients.

[1 mark]

(b) From paragraph 8, what illnesses do the clients suffer from?

They suffer from schizophrenia, depression and obsessive-compulsive disorders.

[1 mark]

30 What can you conclude from the fact that most of the clients are mainly from the younger age group? Answer in your own words.

This group may face the most stress compared to other age groups as they are about to embark in the next stage in their life. Some may be embracing adulthood, entering the corporate world, getting married or starting a family. All these new experiences and changes in one's life are bound to create conflicts, confusion and stress which can be overwhelming.

[2 marks]

31 Write a summary on the **Illness Management Recovery (IMR) programme** offered by the association.

Credit will be given for use of own words but care must be taken not to change the original meaning.

Your summary must:

- be in continuous writing form (not in note form)
- use material from **lines 9 to 31**
- not be longer than **130 words, including the 10 words given below**

Begin your summary as follows:

The Malaysian Mental Health Association offers the Illness Management Recovery ...

[15 marks]

(Suggested answer)

The Malaysian Mental Health Association offers the Illness Management Recovery (IMR) programme. It is a psycho-social education programme. It follows a semi-structured programme which is aimed at helping clients to understand their mental condition and teach them methods to cope with distressing symptoms such as stress. Through this programme, clients will learn how to communicate and verbalise their problems, to be compliant with their medications, to recognise and report relapsing symptoms and to set goals for socialising and returning to work. It also aims to restore the clients to a socially functional state so that they can return to work or their daily lives. In addition, through this programme, the association works with the clients to tackle their problems so that they can cope better with their illness.

(130 words)

Section D

[20 marks]

[Time suggested: 35 minutes]

32 Read the poem below and answer the questions that follow.

What Has Happened to Lulu?

What has happened to Lulu, mother?
 What has happened to Lu?
 There's nothing in her bed but an old rag-doll
 And by its side a shoe.

Why is her window wide, mother,
 The curtain flapping free,
 And only *a circle on the dusty shelf*
 Where her money-box used to be?

Why do you turn your head, mother,
 And why do the tear-drops fall?
 And why do you crumple that note on the fire
 And say it is nothing at all?

I woke to voices late last night,
 I heard an engine roar.
 Why do you tell me the things I heard
 Were a dream and nothing more?

I heard somebody cry, mother,
 In anger or in pain,
 But now I ask you why, mother,
 You say it was a gust of rain.

Why do you wander about as though
 You don't know what to do?
 What has happened to Lulu, mother?
 What has happened to Lu?

Charles Causley

- (a) What is the persona's feeling expressed throughout the poem?

Worry and anxiety.

[1 mark]

- (b) In stanza 2,

- i. what does the phrase *a circle on the dusty shelf* suggest?

The circle marks the spot on the shelf where the money box was placed.

[1 mark]

- ii. why do you think the persona is asking for his sister?

I think he misses his sister and is worried about her disappearance.

[1 mark]

(c) The persona repeatedly asks his mother about Lulu's disappearance.

i. Why do you think the mother is wandering about?

She is at a loss at what to do about Lulu's disappearance.

[1 mark]

ii. Why do you think the persona asked his mother repeatedly?

He thinks his mother is giving him excuses rather than answering his questions about Lulu's whereabouts.

(Accept any suitable answer)

[1 mark]

[5 marks]

34 The following are the novels studied in the literature component in English Language.

Sing to the Dawn – Minfong Ho
Captain Nobody – Dean Pitchford
Dear Mr. Kilmer – Anne Schraff

Choose any **one** of the novels above and answer the question below.

Using the details in the novel you have studied, write about an event that shows a **character's bravery**. Provide evidence from the text to support your answer.

[15 marks]

(Suggested answer)

In the novel, "Dear Mr Kilmer", a character who is brave is the main character, Richard Knight. He shines in an event when his courage is put to the test. This happens when Richard is the only one in his class to sign the card to express their regret for the Schermers. Hannah Schermer and her family are of German heritage living in Turtle Lake, where the Schermers own a tavern. The people are not too happy as they are Germans because America was then at war with Germany in Europe. So they go on a rampage and paint the tavern with unpleasant words. The citizens fail to see that the Schermers are American citizens who are loyal to the country.

Richard is able to see the situation Hannah was in and rises to the occasion. When their English teacher, Mrs Hansen, comes up with an idea of the card to show their support for the Schermers, the rest of the class refuses to sign it. Only Richard is brave enough to put his name on the card. He goes a step further by writing a short message on the empty card to express his regret at the unfortunate incident. He then volunteers to deliver it to Hannah. However, Richard has to face the wrath of two classmates, Abner Lewis and Harry Carver. The boys taunt him as 'a Hun lover', but this only fires up his determination to support the Schermers.

Thus, this event demonstrates Richard's bravery in standing up for his beliefs. He shows courage not to be pressured in following his classmates' actions. He is a true friend who is ready to stand by Hannah in her hour of need. His actions also illustrate his compassionate nature. It takes a great amount of courage to not follow the crowd. Richard proves that he is a kind, gentle and brave boy.

KERTAS PEPERIKSAAN TAMAT