



## **CHAPTER 1: INTRODUCTION TO BIOLOGY**



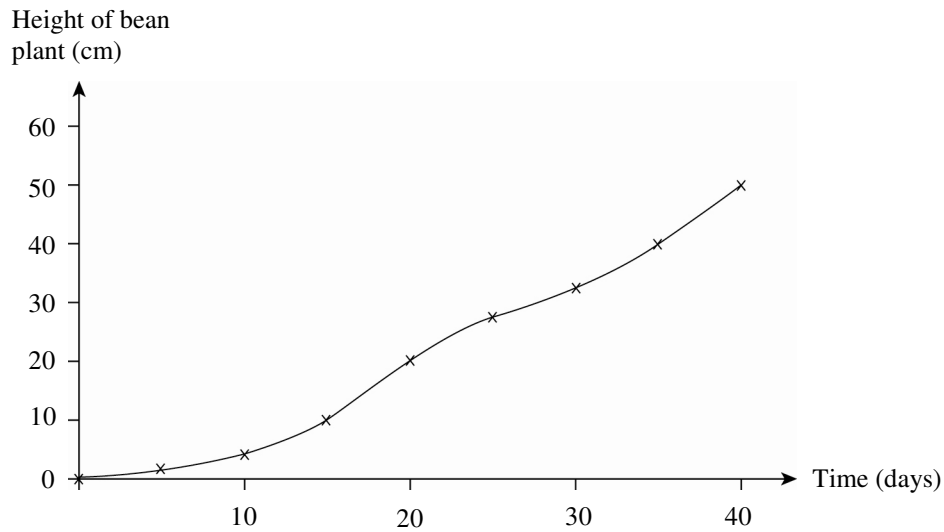
### **Paper 1 (Objective Questions)**

1. What is the role of a control experiment?
  - A To function as a backup experiment
  - B To implement the controlled variables
  - C To enable an experiment to be controlled
  - D To permit comparison with the experimental results
2. A group of students carry out an experiment by following the instructions shown below.

Carry out an experiment on the making of bread using yeast in the absence and presence of sugar. Record the time taken for the dough to double its size.

- Which of the following best expresses the aim of the investigation?
- A To see how long the dough takes to double in size
  - B To record the time taken for the dough to double in size
  - C To measure and record the time taken for a known mass of dough to double in size
  - D To measure and record the time taken for two similar masses of dough, one with sugar and the other without sugar, to double in size
3. Which of the following best illustrates the aim of the investigation given in Question 2?
    - A To investigate the rise of bread dough
    - B To investigate how sugar affects bread dough
    - C To investigate the relationship between sugar and bread dough
    - D To investigate the effect of the presence and absence of sugar on the rise of bread dough
  4. Which of the following might be a conclusion drawn from an experiment?
    - I Reject the hypothesis because the experimental evidence supports it
    - II Reject the hypothesis because the experimental evidence does not support it
    - III Accept the hypothesis because the experimental evidence supports it
    - IV Accept the hypothesis because the experimental evidence does not support it
    - A I and III
    - B II and III
    - C II and IV
    - D III and IV

5. A student presented the results of his experiment in the form of a graph which is shown below.



What is incomplete about the graph?

- A The graph has no title.
- B A proper graph paper should have been used.
- C The height of the bean plant should be in metres.
- D A histogram should be used instead of a line graph.