

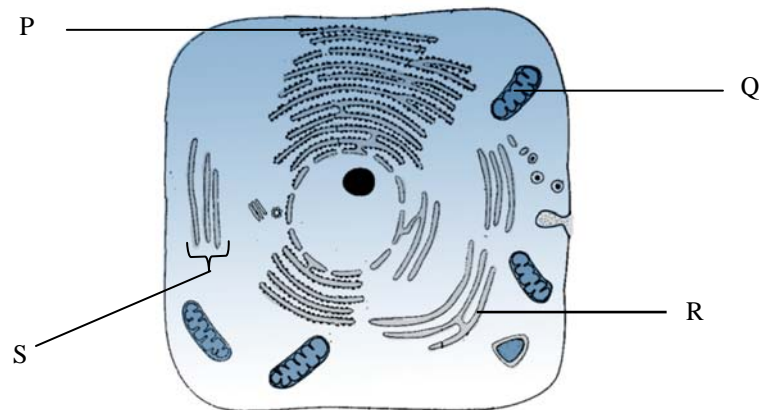


CHAPTER 2: CELL STRUCTURE AND CELL ORGANISATION



The Cellular Components of Animal and Plant Cells

1. The diagram below shows a cell as seen under an electron microscope.



- (a) i. What kind of cell is shown in the above diagram?

_____ [1 mark]

- ii. State **two** reasons for your answer in (a) i.

1. _____

2. _____

[2 marks]

- (b) Name the parts labelled P, Q, R and S and state their functions.

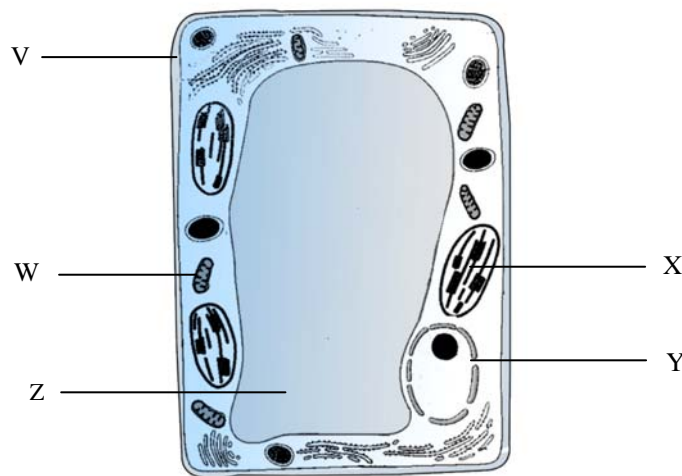
Part	Name	Function
P		
Q		
R		
S		

[8 marks]

(c) Explain the relationship between the parts labelled S and P in a protein-secreting cell.

[2 marks]

2. The diagram below shows a plant cell as seen under an electron microscope.



(a) i. Name the parts labelled V, X, Y and Z.

V: _____

X: _____

Y: _____

Z: _____

[4 marks]

ii. State the functions of the parts labelled X and Y.

X: _____

Y: _____

[2 marks]

(b) Explain the role of Z in maintaining cell turgidity.

[2 marks]

(c) i. State **two** similarities between the parts labelled W and X.

1. _____

2. _____

[2 marks]

ii. State **two** differences between the parts labelled W and X.

1. _____

2. _____

[2 marks]