

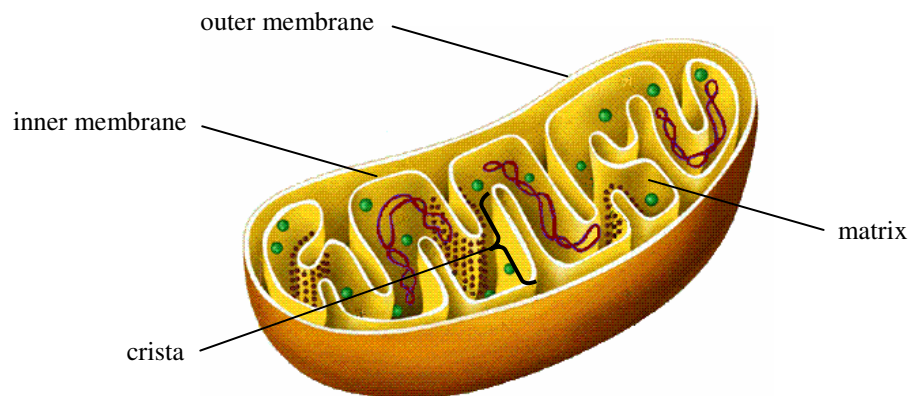


CHAPTER 2: CELL STRUCTURE AND CELL ORGANISATION



The Mitochondrion

1. **Cristae** (singular, crista) are the infoldings of the inner membrane of a mitochondrion.
2. Cristae increase the surface area of the membrane of the mitochondrion.
3. **Enzymes** catalyzing the synthesis of ATP are found in the matrix and are also embedded in the cristae and the inner membrane of the mitochondrion.



A mitochondrion