

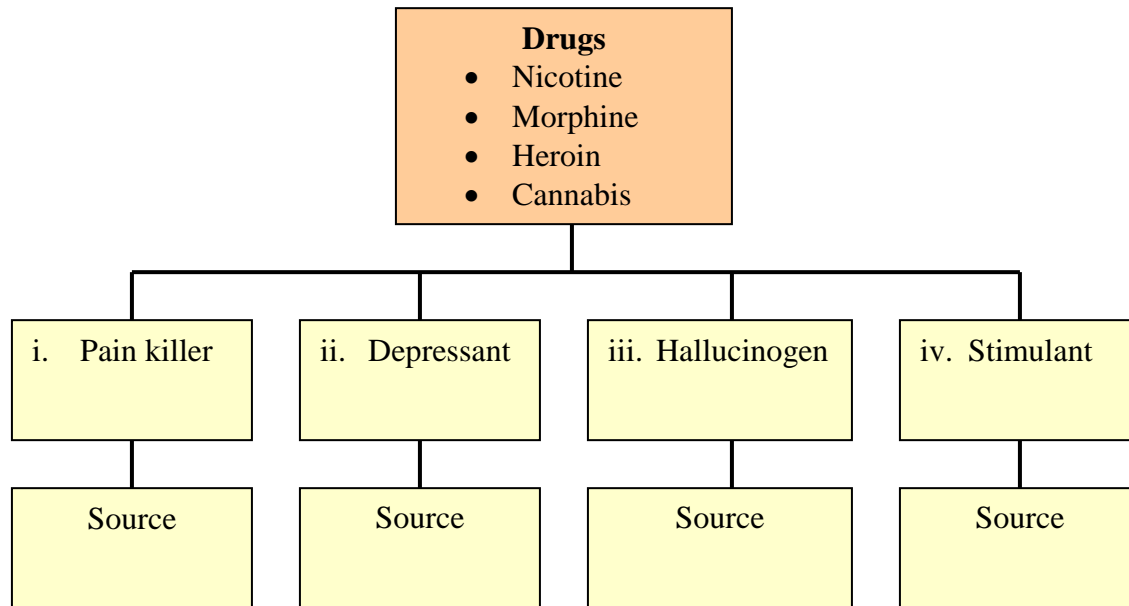


CHAPTER 2: BODY COORDINATION



PAPER 2: Section A (Structured Questions)

1 The chart in the diagram below shows the types of drugs.



(a) Classify the drugs listed below into the four groups shown in the chart. [4 marks]

(b) State the source of each drug. [4 marks]

(c) i. How is heroin usually taken?

ii. In what way is this method dangerous?


[2 marks]

(d) How do stimulants affect the body?

[1 mark]

(e) Suggest **two** problems which may result from drug addiction.

[2 marks]

 **PAPER 2: Section B (Structured Questions)**

2 Jane accidentally touched the hot plate of an electric iron and immediately withdrew her hand.

(a) What type of action was carried out by Jane?

_____ [1 mark]

(b) Which part of Jane's body controls this type of action?

_____ [1 mark]

(c) Is this type of action an advantage to the body? Give your reason.

_____ [1 mark]

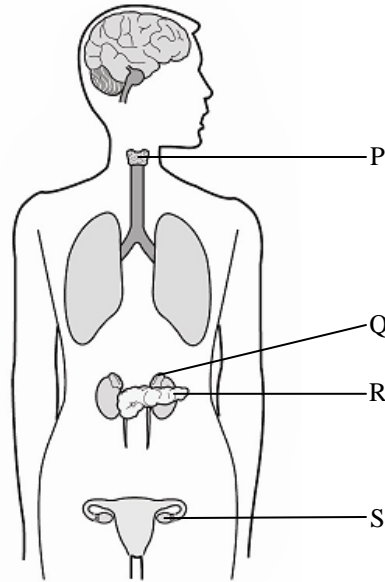
(d) Trace the path of such an action in the body.

_____ [1 mark]

(e) Why is damage to the medulla oblongata likely to cause death?

_____ [1 mark]

3 The diagram below shows four ductless glands in a woman's body.



(a) Identify the four ductless glands labelled P, Q, R and S.

[1 mark]

(b) What substances do these ductless glands secrete?

_____ [1 mark]

(c) How are these secretions transmitted through the body?

_____ [1 mark]

(d) Lack of secretion from which of the glands labelled P, Q, R and S may cause a child to become an idiotic dwarf?

_____ [1 mark]

(e) i. Which gland produces the substance insulin?

ii. What may happen to a person who does not produce enough insulin?

_____ [2 marks]