



CHAPTER 8: ELECTROMAGNETISM



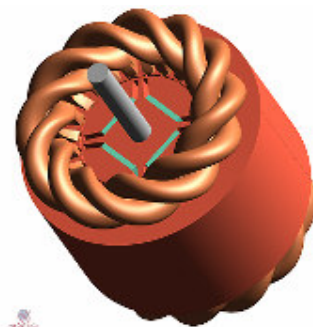
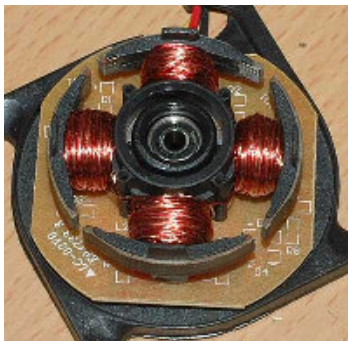
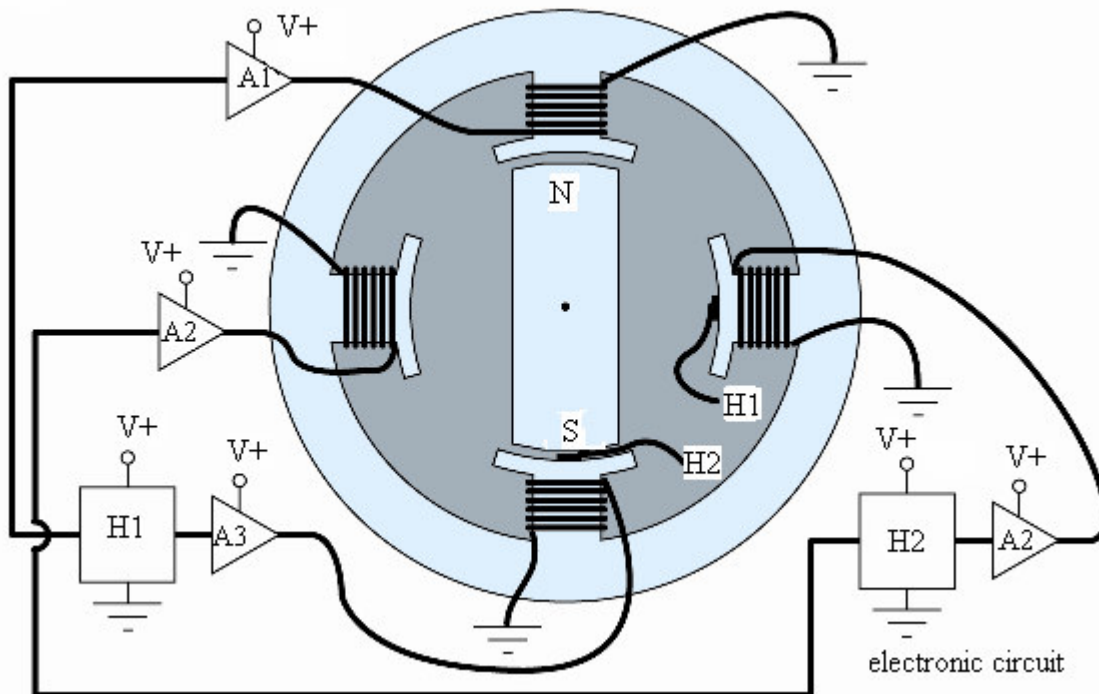
EXTRA INFO

The Brushless DC Electric Motor

A conventional dc motor with commutators has low efficiency and reliability, is noisy, has problems of sparks and brush erosion.

To overcome these shortcomings, brushless dc motors are used nowadays.

In a brushless dc motor, the electromagnetic coil does not rotate; instead, the permanent magnets rotate. The commutator is replaced by an electronic circuit.



Various types of brushless DC electric motor