



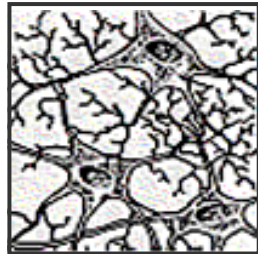
CHAPTER 2: CELL STRUCTURE AND CELL ORGANISATION



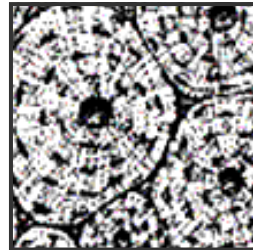
Paper 1 (Objective Questions)

1. What is a group of different tissues working together to accomplish a common purpose called?
A A cell
B An organ
C An organelle
D An organ system
2. Which type of tissue connects muscle to bone?
A Tendon
B Cartilage
C Ligament
D Epithelium
3. Which cells can contract?
A Muscle
B Skeletal
C Connective
D Epithelial
4. Which of the following is a connective tissue?

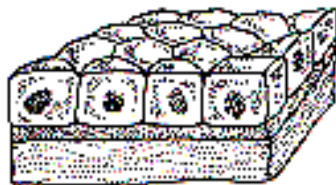
A



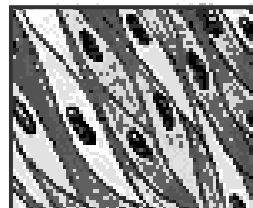
B



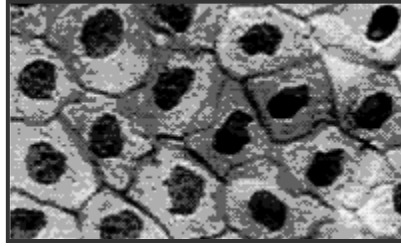
C



D



5. The diagram below shows a type of epithelial tissue.



In which organ can this epithelial tissue be found?

- I Skin
 - II Trachea
 - III Lung
 - IV Small intestine
- A I and III
 - B II and III
 - C II and IV
 - D III and IV